

**Maharshi Karve Stree Shikshan Samstha's  
Smt. Bakul Tambat Institute of Nursing Education,  
Karvenagar, Pune-52.**

**STUDENT  
SATISFACTION SURVEY  
(2021-22)**

**MAHARSHI KARVE STREE SHIKSHAN SAMSTHA'S,  
SMT. BAKUL TAMBAT INSTITUTE OF NURSING EDUCATION  
KARVENAGAR, PUNE - 411052**

**Analysis report on Student Satisfaction Survey (2021-2022)**

83% of students agreed that 70–100% of syllabus was covered in class.

64% of students agreed that teachers satisfactorily prepares for class.

70% of students agreed teachers effectively able to communicate with the students and parents.

66% of students agreed that teacher's approach to teaching best described as very good to excellent.

48% of students agreed that teachers are always fair in internal evaluation process.

54% of students agreed that performance in assignments was discussed with them frequently.

70% of students agreed that institutes actively participates in promoting internship, student exchange and field visit opportunities.

57% of students agreed that the teaching and mentoring process in the institute facilitates cognitive, social and emotional growth of the students.

54% of students agreed that institute provides multiple opportunities to learn and grow.

69% of students agreed that teachers identify their strengths and accordingly encourages them to face challenges.

59% of students agreed that teachers are able to identify their weaknesses and help them to overcome it.

60% of students agreed that teachers inform them about their expected competencies, course outcomes and programme outcomes.

66% of students agreed that the institution makes effort to engage them in the monitoring, review and continuous quality improvement of the teaching learning process.

66% of students agreed that their mentor teacher take necessary follow-up with an assigned task.

49% of students agreed that the institute/ teachers uses student centric methods, such as experiential learning, participative learning and problem solving methodologies for enhancing learning experiences.

65% of students agreed that the teachers illustrate the concepts through examples and applications.

57% of students agreed that teachers encourages them to participate in extracurricular activities.

54% of students agreed that efforts are made by the institute/ teachers to inculcate soft skills, life skills and employability skills to make them ready for the world of work.

44% of students agreed that 90% teachers uses ICT tools such as LCD projector, multimedia, etc. while teaching.

54% of students agreed that the overall quality of teaching learning process in the institute is very good.



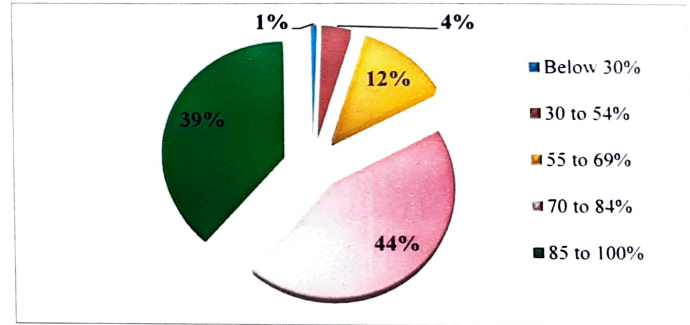
Sign. of Principal  
**PRINCIPAL**

**Maharshi Karve Stree Shikshan Samstha's  
Smt. Bakul Tambat Institute of  
Nursing Education  
Karvenagar, Pune-411052.**

**Maharshi Karve Stree Shikshan Samstha's  
Smt. Bakul Tambat Institute of Nursing Education  
Karvenagar, Pune -52  
Students Satisfaction Survey Analysis (2021-22)**

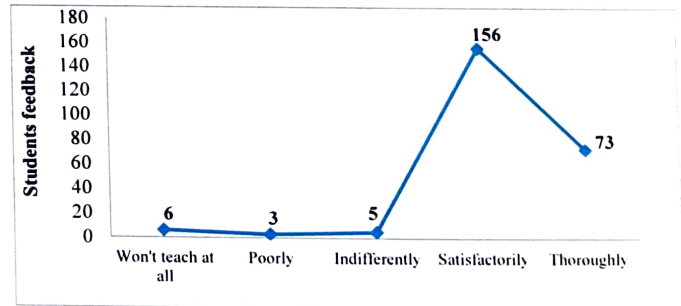
**1. How much of the syllabus was covered in the class?**

Criteria	Frequency	Percentage (%)
Below 30%	2	1
30 to 54%	10	4
55 to 69%	30	12
70 to 84%	107	44
85 to 100%	94	39
<b>Total</b>	<b>243</b>	<b>100.00</b>



**2. How well did the teachers prepare for the classes?**

Criteria	Frequency	Percentage (%)
Won't teach at all	6	2
Poorly	3	1
Indifferently	5	2
Satisfactorily	156	64
Thoroughly	73	30
<b>Total</b>	<b>243</b>	<b>100.00</b>



*(Signature)*  
**Sign of Principal**  
PRINCIPAL  
MKSS INSTITUTE  
OF NURSING EDUCATION  
PUNE

**Maharshi Karve Stree Shikshan Samstha's  
Smt. Bakul Tambat Institute of Nursing Education  
Karvenagar, Pune -52  
Students Satisfaction Survey Analysis (2021-22)**

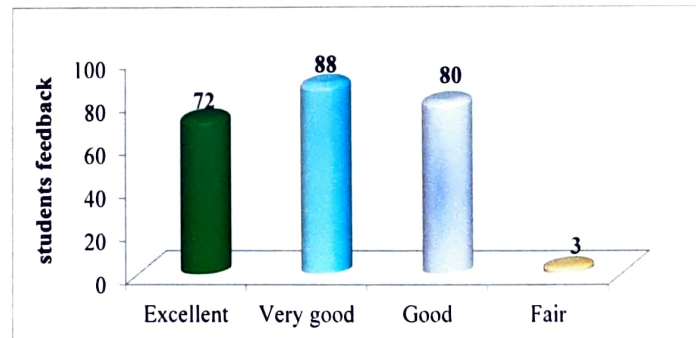
3. How well were the teachers able to communicate?

Criteria	Frequency	Percentage (%)
Always effective	171	70
Sometimes effective	50	21
Just Satisfactory	22	9
Generally Ineffective	0	0
<b>Total</b>	<b>243</b>	<b>100.00</b>



4. The teacher's approach to teaching can best be described as....

Criteria	Frequency	Percentage (%)
Excellent	72	30
Very good	88	36
Good	80	33
Fair	3	1
<b>Total</b>	<b>243</b>	<b>100.00</b>

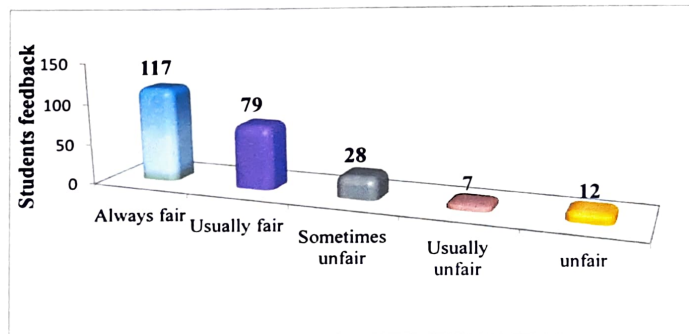


  
**Sign of Principal**  
 PRINCIPAL  
 MKSSS INSTITUTE  
 OF NURSING EDUCATION  
 PUNE

**Maharshi Karve Stree Shikshan Samstha's  
Smt. Bakul Tambat Institute of Nursing Education  
Karvenagar, Pune -52  
Students Satisfaction Survey Analysis (2021-22)**

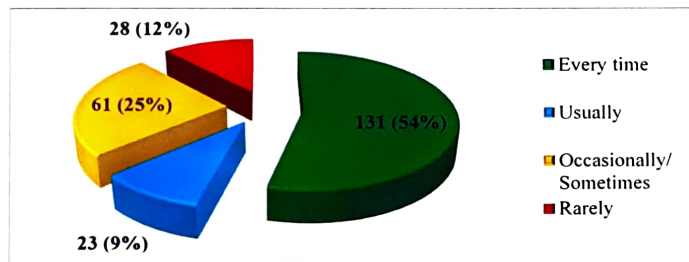
5. Fairness of the internal evaluation process by the teachers.

Criteria	Frequency	Percentage (%)
Always fair	117	48
Usually fair	79	33
Sometimes unfair	28	12
Usually unfair	7	3
unfair	12	5
<b>Total</b>	<b>243</b>	<b>100.00</b>



6. Was your performance in assignments discussed with you?

Criteria	Frequency	Percentage (%)
Every time	131	54
Usually	23	9
Occasionally/ Sometimes	61	25
Rarely	28	12
<b>Total</b>	<b>243</b>	<b>100.00</b>

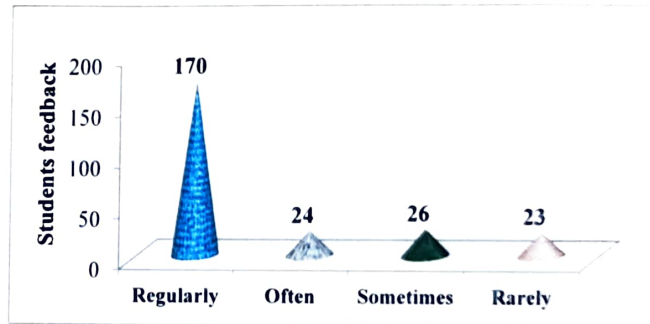


  
**Sign of Principal**  
 PRINCIPAL  
 MKSSS INSTITUTE  
 OF NURSING EDUCATION  
 PUNE

**Maharshi Karve Stree Shikshan Samstha's  
Smt. Bakul Tambat Institute of Nursing Education  
Karvenagar, Pune -52  
Students Satisfaction Survey Analysis (2021-22)**

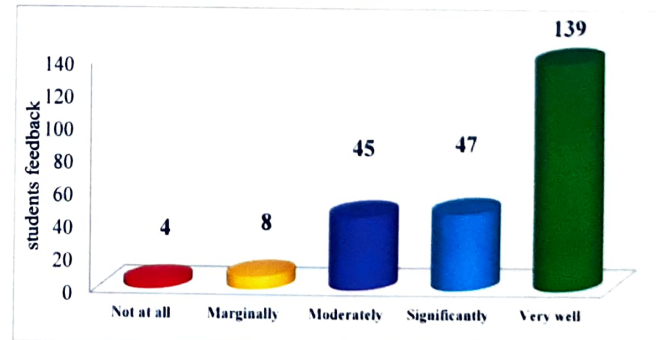
7. The institute takes active interest in promoting internship, student exchange, and field visit opportunities for students.

Criteria	Frequency	Percentage (%)
Regularly	170	70
Often	24	10
Sometimes	26	11
Rarely	23	9
<b>Total</b>	<b>243</b>	<b>100.00</b>



8. The teaching and mentoring process in your institution facilitates you in cognitive, social and emotional growth.

Criteria	Frequency	Percentage (%)
Not at all	4	2
Marginally	8	3
Moderately	45	19
Significantly	47	19
Very well	139	57
<b>Total</b>	<b>243</b>	<b>100.00</b>



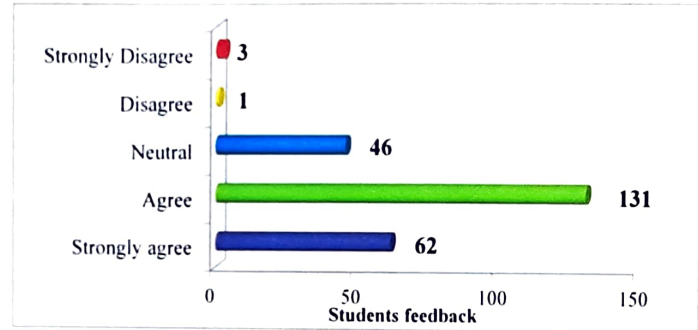
  
**Sign of Principal**  
 PRINCIPAL  
 MAHARSHI KARVE STREE SHIKSHAN SAMSTHA'S  
 SMT. BAKUL TAMBAT INSTITUTE OF NURSING EDUCATION  
 KARVENAGAR, PUNE



**Maharshi Karve Stree Shikshan Samstha's**  
**Smt. Bakul Tambat Institute of Nursing Education**  
**Karvenagar, Pune -52**  
**Students Satisfaction Survey Analysis (2021-22)**

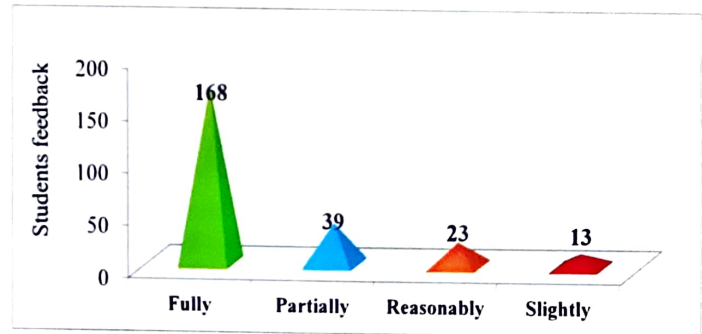
9. The institution provides multiple opportunities to learn and grow.

Criteria	Frequency	Percentage (%)
Strongly agree	62	26
Agree	131	54
Neutral	46	19
Disagree	1	0
Strongly Disagree	3	1
<b>Total</b>	<b>243</b>	<b>100.00</b>



10. The teachers identify your strengths and encourage you with providing right level of challenges.

Criteria	Frequency	Percentage (%)
Fully	168	69
Partially	39	16
Reasonably	23	9
Slightly	13	5
<b>Total</b>	<b>243</b>	<b>100.00</b>



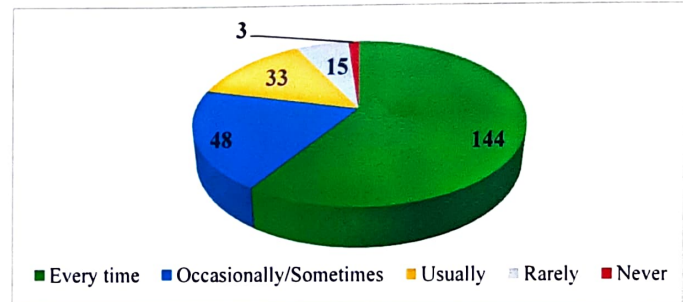
  
**Sign of Principal**  
 PRINCIPAL  
 MKSS INSTITUTE  
 OF NURSING EDUCATION  
 PUNE



**Maharshi Karve Stree Shikshan Samstha's  
Smt. Bakul Tambat Institute of Nursing Education  
Karvenagar, Pune -52  
Students Satisfaction Survey Analysis (2021-22)**

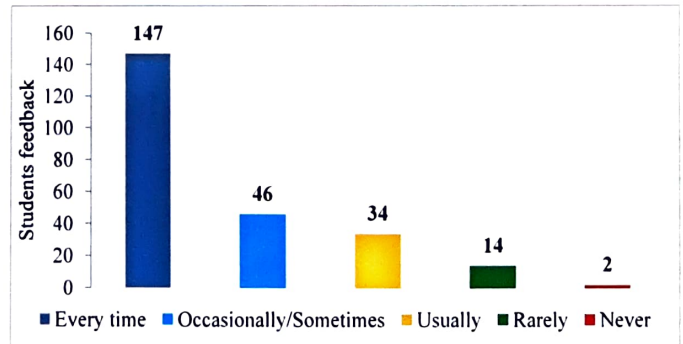
11. Teachers are able to identify your weaknesses and help you to overcome them.

Criteria	Frequency	Percentage (%)
Every time	144	59
Occasionally/Sometimes	48	20
Usually	33	14
Rarely	15	6
Never	3	1
<b>Total</b>	<b>243</b>	<b>100.00</b>



12. Teachers inform you about your expected competencies, course outcomes and programme outcomes.

Criteria	Frequency	Percentage (%)
Every time	147	60
Occasionally/Sometimes	46	19
Usually	34	14
Rarely	14	6
Never	2	1
<b>Total</b>	<b>243</b>	<b>100.00</b>

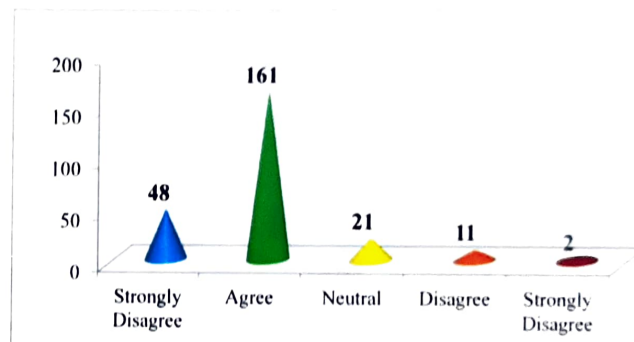


  
**Sign of Principal**  
 PRINCIPAL  
 MKSSS INSTITUTE  
 OF NURSING EDUCATION  
 PUNE

**Maharshi Karve Stree Shikshan Samstha's  
Smt. Bakul Tambat Institute of Nursing Education  
Karvenagar, Pune -52  
Students Satisfaction Survey Analysis (2021-22)**

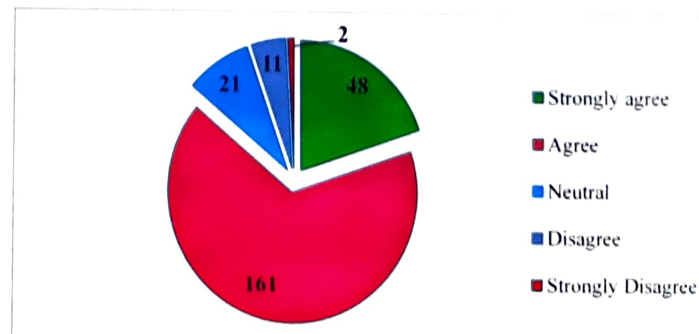
13. The institution makes effort to engage students in the monitoring, review and continuous quality improvement of the teaching learning process.

Criteria	Frequency	Percentage (%)
Strongly Disagree	48	20
Agree	161	66
Neutral	21	9
Disagree	11	5
Strongly Disagree	2	1
<b>Total</b>	<b>243</b>	<b>100.00</b>



14. Your mentor does a necessary follow-up with an assigned task to you.

Criteria	Frequency	Percentage (%)
Strongly agree	48	20
Agree	161	66
Neutral	21	9
Disagree	11	5
Strongly Disagree	2	1
<b>Total</b>	<b>243</b>	<b>100.00</b>

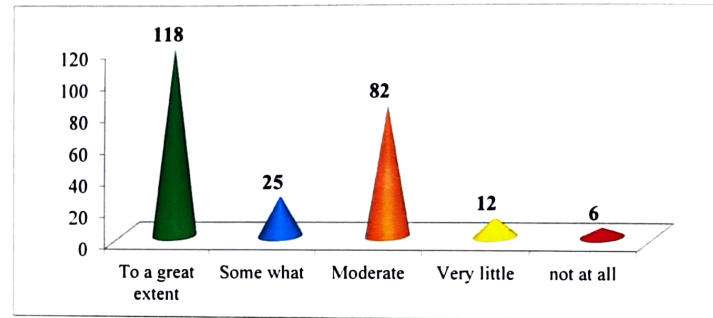


*M. S. Meera*  
**Sign of Principal**  
PRINCIPAL  
MKSSS INSTITUTE  
OF NURSING EDUCATION  
PUNE

**Maharshi Karve Stree Shikshan Samstha's**  
**Smt. Bakul Tambat Institute of Nursing Education**  
**Karvenagar, Pune -52**  
**Students Satisfaction Survey Analysis (2021-22)**

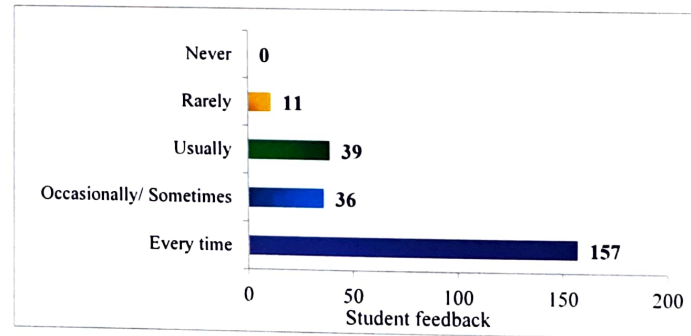
15. The institute/ teachers use student centric methods, such as experiential learning, participative learning and problem solving methodologies for enhancing learning experiences.

Criteria	Frequency	Percentage (%)
To a great extent	118	49
Some what	25	10
Moderate	82	34
Very little	12	5
not at all	6	2
<b>Total</b>	<b>243</b>	<b>100.00</b>



16. The teachers illustrate the concepts through examples and applications.

Criteria	Frequency	Percentage (%)
Every time	157	65
Occasionally/ Sometimes	36	15
Usually	39	16
Rarely	11	5
Never	0	0
<b>Total</b>	<b>243</b>	<b>100.00</b>

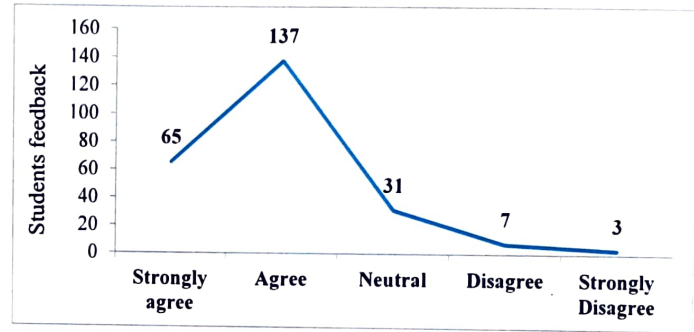


  
**Sign of Principal**  
 PRINCIPAL  
 MKSSS INSTITUTE  
 OF NURSING EDUCATION  
 PUNE

**Maharshi Karve Stree Shikshan Samstha's  
Smt. Bakul Tambat Institute of Nursing Education  
Karvenagar, Pune -52  
Students Satisfaction Survey Analysis (2021-22)**

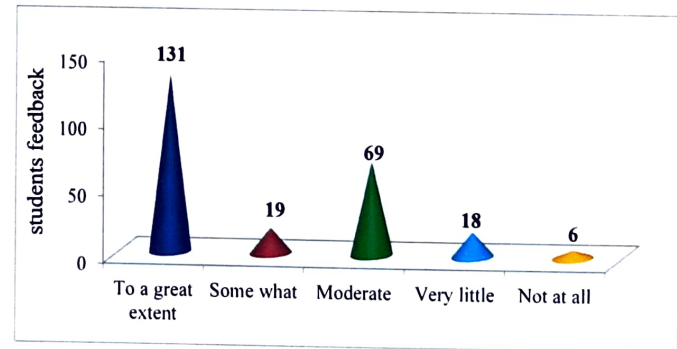
17. Teachers encourage you to participate in extracurricular activities.

Criteria	Frequency	Percentage (%)
Strongly agree	65	27
Agree	137	56
Neutral	31	13
Disagree	7	3
Strongly Disagree	3	1
<b>Total</b>	<b>243</b>	<b>100.00</b>



18. Efforts are made by the institute/ teachers to inculcate soft skills, life skills and employability skills to make you ready for the world of work.

Criteria	Frequency	Percentage (%)
To a great extent	131	54
Some what	19	8
Moderate	69	28
Very little	18	7
Not at all	6	2
<b>Total</b>	<b>243</b>	<b>100.00</b>

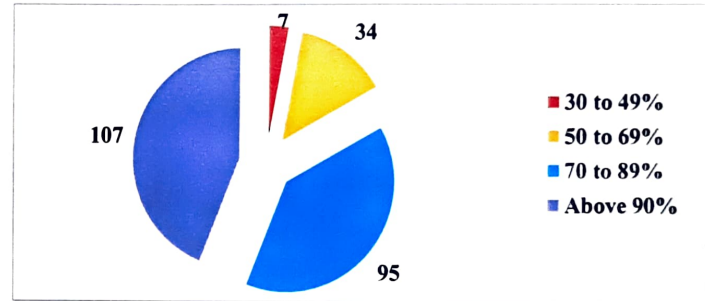


  
**Sign of Principal**  
 PRINCIPAL  
 MKSSS INSTITUTE  
 OF NURSING EDUCATION  
 PUNE

**Maharshi Karve Stree Shikshan Samstha's  
Smt. Bakul Tambat Institute of Nursing Education  
Karvenagar, Pune -52  
Students Satisfaction Survey Analysis (2021-22)**

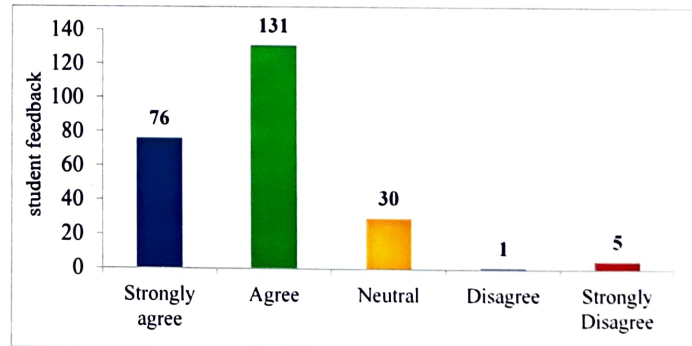
19. What percentage of teachers use ICT tools such as LCD projector, Multimedia, etc. while teaching.

Criteria	Frequency	Percentage (%)
30 to 49%	7	3
50 to 69%	34	14
70 to 89%	95	39
Above 90%	107	44
<b>Total</b>	<b>243</b>	<b>100.00</b>



20. The overall quality of teaching learning process in your Institute is very good

Criteria	Frequency	Percentage (%)
Strongly agree	76	31
Agree	131	54
Neutral	30	12
Disagree	1	0
Strongly Disagree	5	2
<b>Total</b>	<b>243</b>	<b>100.00</b>



  
**Sign of Principal**  
 PRINCIPAL  
 MKSSS INSTITUTE  
 OF NURSING EDUCATION  
 PUNE