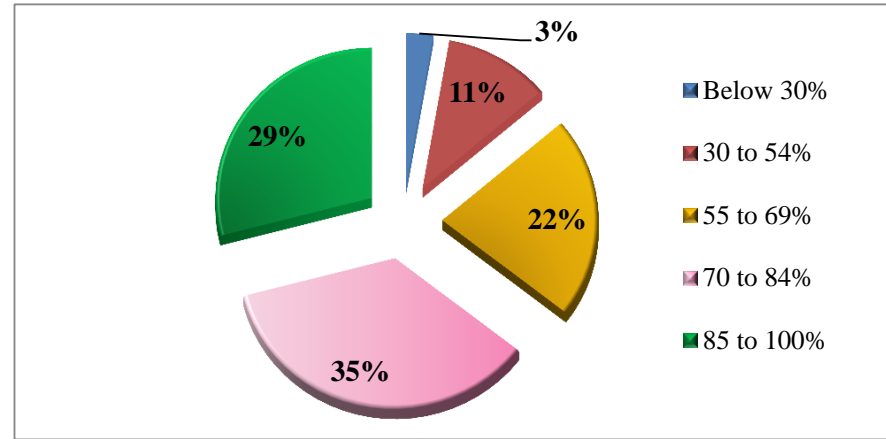


**Maharshi Karve Stree Shikshan Samstha's
Smt. Bakul Tambat Institute of Nursing Education
Karvenagar, Pune -52
Students Satisfaction Survey Analysis (2022-23)**

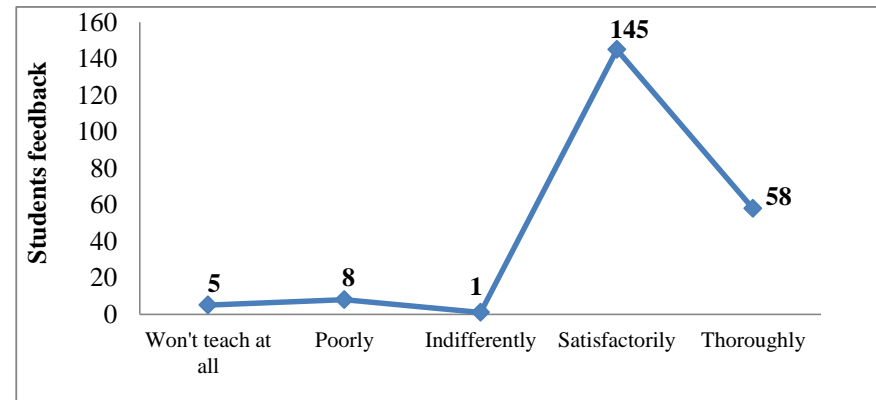
1. How much of the syllabus was covered in the class?

Criteria	Frequency	Percentage (%)
Below 30%	6	3
30 to 54%	24	11
55 to 69%	47	22
70 to 84%	77	35
85 to 100%	63	29
Total	217	100.00



2.How well did the teachers prepare for the classes?

Criteria	Frequency	Percentage (%)
Won't teach at all	5	2
Poorly	8	4
Indifferently	1	0
Satisfactorily	145	67
Thoroughly	58	27
Total	217	100.00

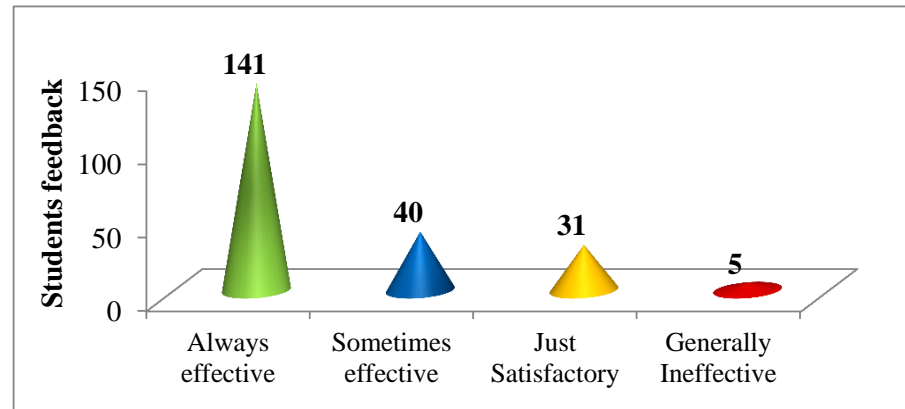


Sign of Principal

**Maharshi Karve Stree Shikshan Samstha's
Smt. Bakul Tambat Institute of Nursing Education
Karvenagar, Pune -52
Students Satisfaction Survey Analysis (2022-23)**

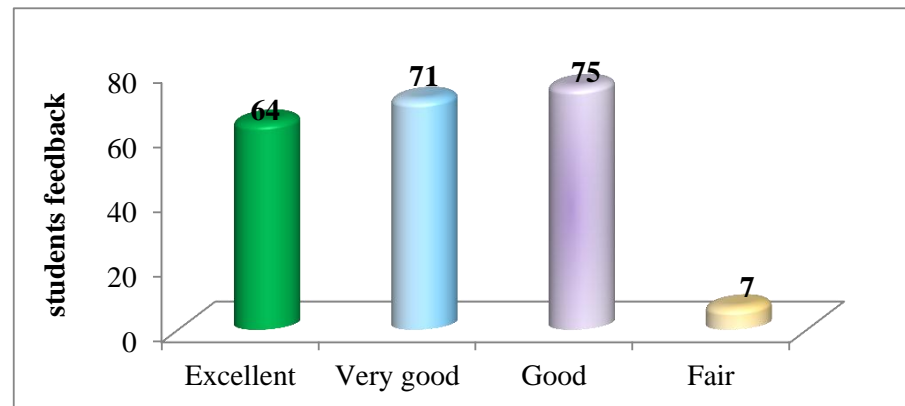
3. How well were the teachers able to communicate?

Criteria	Frequency	Percentage (%)
Always effective	141	65
Sometimes effective	40	18
Just Satisfactory	31	14
Generally Ineffective	5	2
Total	217	100.00



4. The teacher's approach to teaching can best be described as....

Criteria	Frequency	Percentage (%)
Excellent	64	29
Very good	71	33
Good	75	35
Fair	7	3
Total	217	100.00

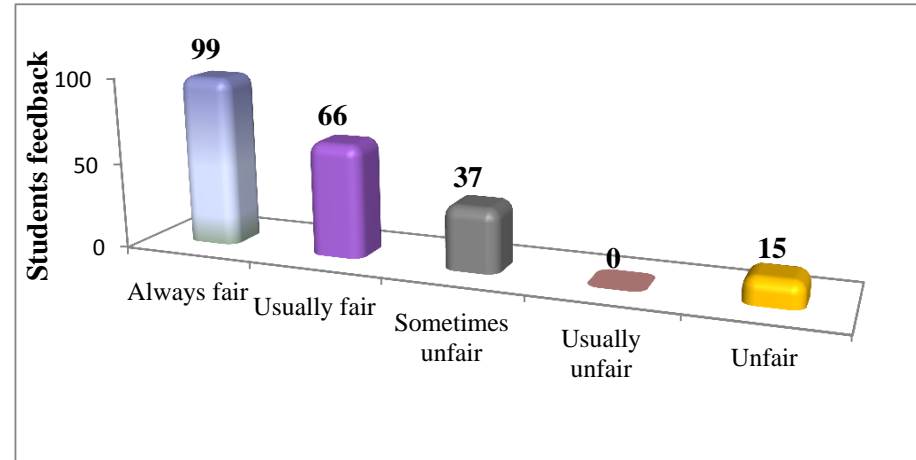


Sign of Principal

**Maharshi Karve Stree Shikshan Samstha's
Smt. Bakul Tambat Institute of Nursing Education
Karvenagar, Pune -52
Students Satisfaction Survey Analysis (2022-23)**

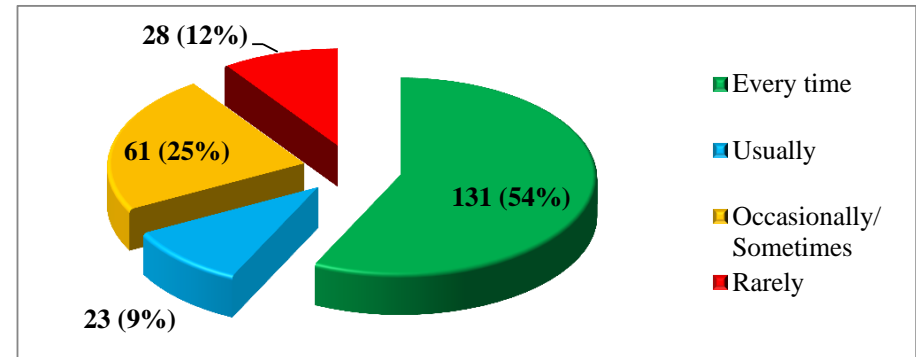
5. Fairness of the internal evaluation process by the teachers.

Criteria	Frequency	Percentage (%)
Always fair	99	46
Usually fair	66	30
Sometimes unfair	37	17
Usually unfair	0	0
Unfair	15	7
Total	217	100.00



6. Was your performance in assignments discussed with you?

Criteria	Frequency	Percentage (%)
Every time	124	57
Usually	22	10
Occasionally/ Sometimes	50	23
Rarely	21	10
Total	217	100.00

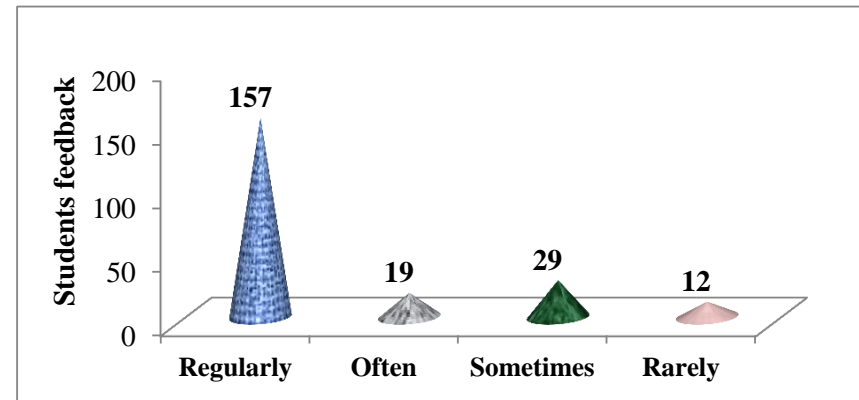


Sign of Principal

**Maharshi Karve Stree Shikshan Samstha's
Smt. Bakul Tambat Institute of Nursing Education
Karvenagar, Pune -52
Students Satisfaction Survey Analysis (2022-23)**

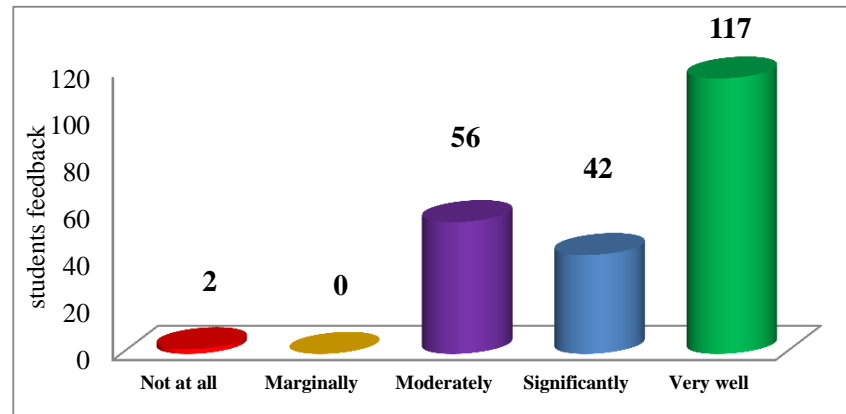
7. The institute takes active interest in promoting internship, student exchange, and field visit opportunities for students.

Criteria	Frequency	Percentage (%)
Regularly	157	72
Often	19	9
Sometimes	29	13
Rarely	12	6
Total	217	100.00



8. The teaching and mentoring process in your institution facilitates you in cognitive, social and emotional growth.

Criteria	Frequency	Percentage (%)
Not at all	2	1
Marginally	0	0
Moderately	56	26
Significantly	42	19
Very well	117	54
Total	217	100.00

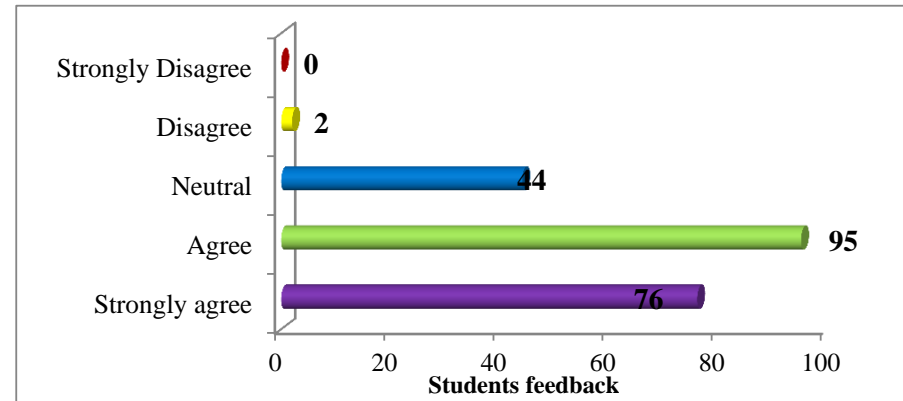


Sign of Principal

**Maharshi Karve Stree Shikshan Samstha's
Smt. Bakul Tambat Institute of Nursing Education
Karvenagar, Pune -52
Students Satisfaction Survey Analysis (2022-23)**

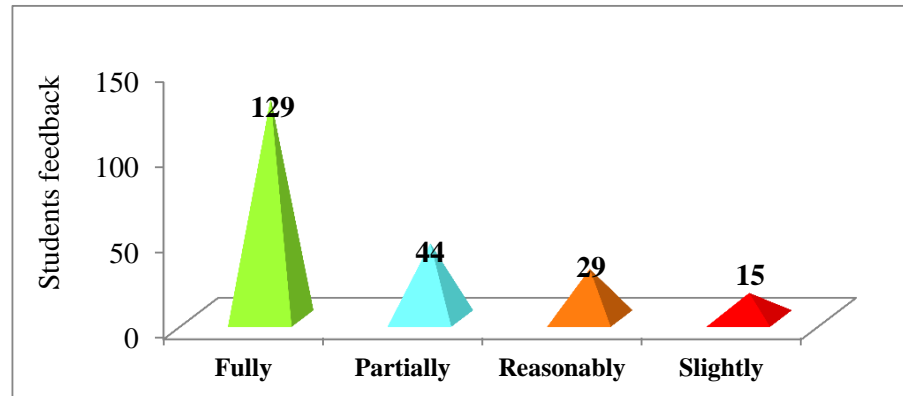
9. The institution provides multiple opportunities to learn and grow.

Criteria	Frequency	Percentage (%)
Strongly agree	76	35
Agree	95	44
Neutral	44	20
Disagree	2	1
Strongly Disagree	0	0
Total	217	100.00



10. The teachers identify your strengths and encourage you with providing right level of challenges.

Criteria	Frequency	Percentage (%)
Fully	129	59
Partially	44	20
Reasonably	29	13
Slightly	15	7
Total	217	100.00

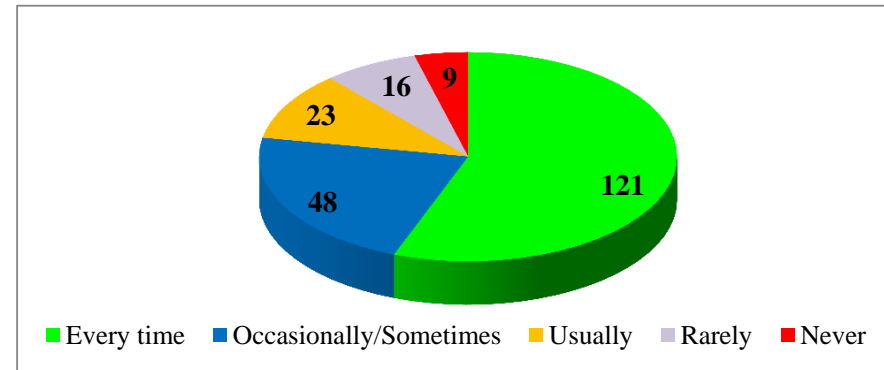


Sign of Principal

**Maharshi Karve Stree Shikshan Samstha's
Smt. Bakul Tambat Institute of Nursing Education
Karvenagar, Pune -52
Students Satisfaction Survey Analysis (2022-23)**

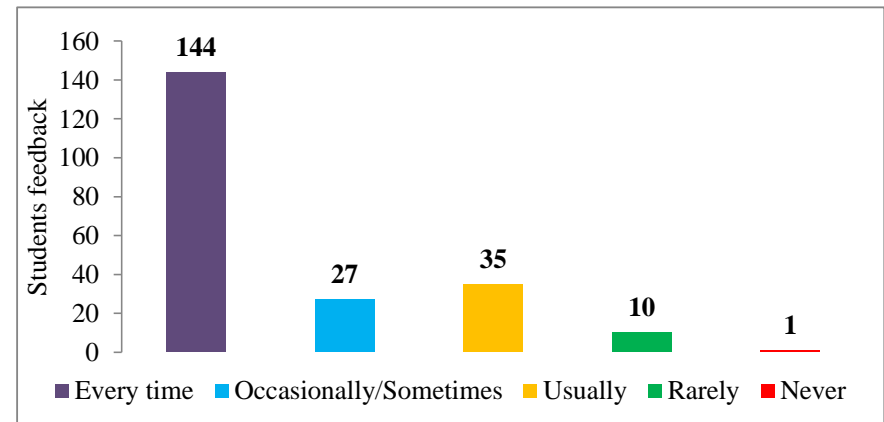
11. Teachers are able to identify your weaknesses and help you to overcome them.

Criteria	Frequency	Percentage (%)
Every time	121	56
Occasionally/Sometimes	48	22
Usually	23	11
Rarely	16	7
Never	9	4
Total	217	100.00



12. Teachers inform you about your expected competencies, course outcomes and programme outcomes.

Criteria	Frequency	Percentage (%)
Every time	144	66
Occasionally/Sometimes	27	12
Usually	35	16
Rarely	10	5
Never	1	0
Total	217	100.00

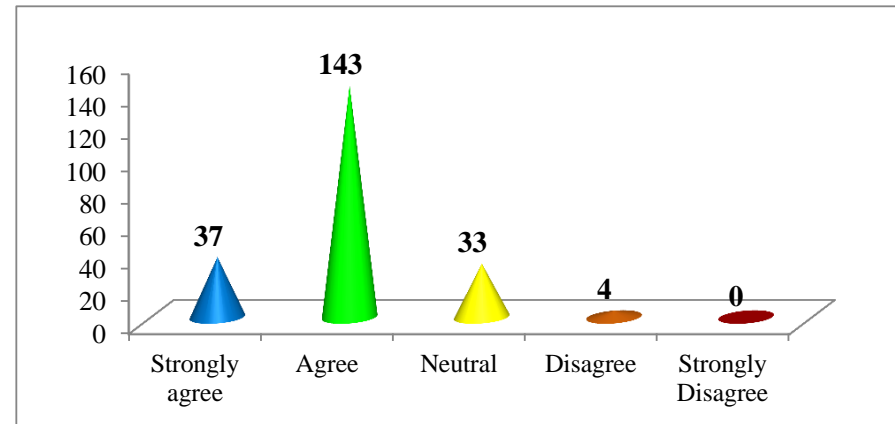


Sign of Principal

**Maharshi Karve Stree Shikshan Samstha's
Smt. Bakul Tambat Institute of Nursing Education
Karvenagar, Pune -52
Students Satisfaction Survey Analysis (2022-23)**

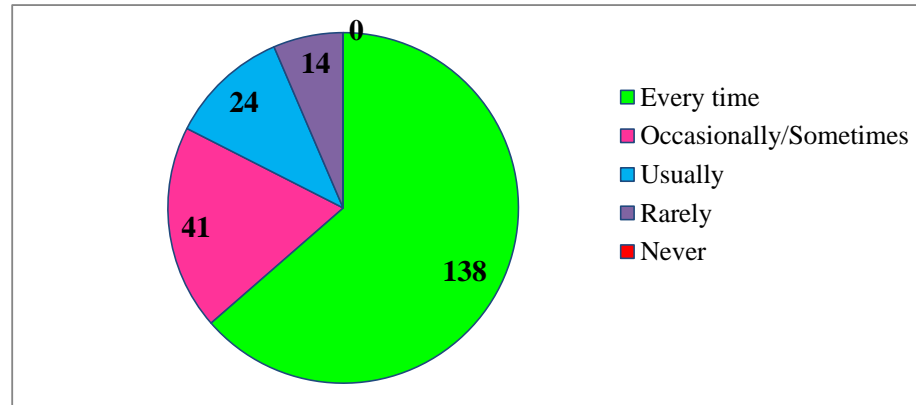
13. The institution makes effort to engage students in the monitoring, review and continuous quality improvement of the teaching learning process.

Criteria	Frequency	Percentage (%)
Strongly agree	37	17
Agree	143	66
Neutral	33	15
Disagree	4	2
Strongly Disagree	0	0
Total	217	100.00



14. Your mentor does a necessary follow-up with an assigned task to you.

Criteria	Frequency	Percentage (%)
Every time	138	64
Occasionally/Sometimes	41	19
Usually	24	11
Rarely	14	6
Never	0	0
Total	217	100.00

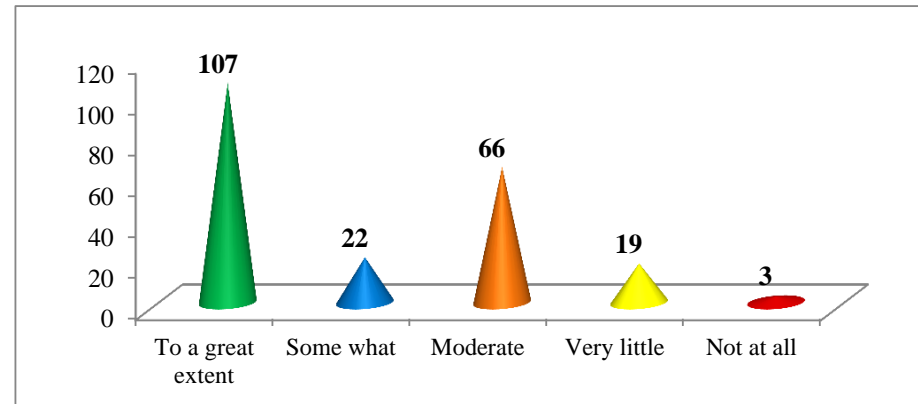


Sign of Principal

**Maharshi Karve Stree Shikshan Samstha's
Smt. Bakul Tambat Institute of Nursing Education
Karvenagar, Pune -52
Students Satisfaction Survey Analysis (2022-23)**

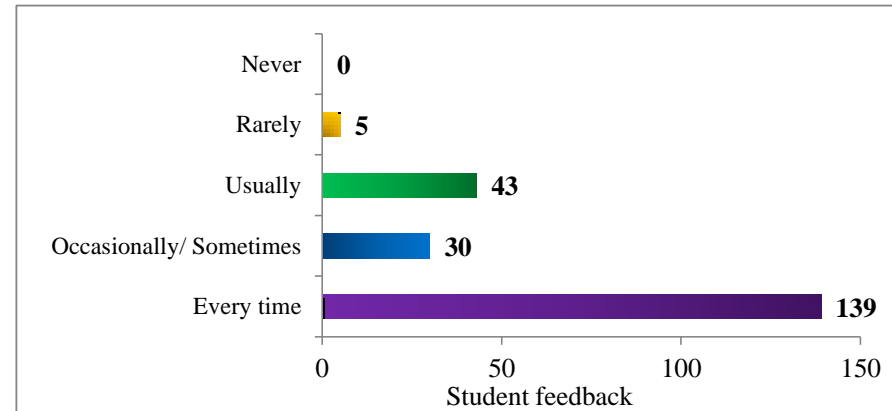
15. The institute/ teachers use student centric methods, such as experiential learning, participative learning and problem solving methodologies for enhancing learning experiences.

Criteria	Frequency	Percentage (%)
To a great extent	107	49
Some what	22	10
Moderate	66	30
Very little	19	9
Not at all	3	1
Total	217	100.00



16. The teachers illustrate the concepts through examples and applications.

Criteria	Frequency	Percentage (%)
Every time	139	64
Occasionally/ Sometimes	30	14
Usually	43	20
Rarely	5	2
Never	0	0
Total	217	100.00

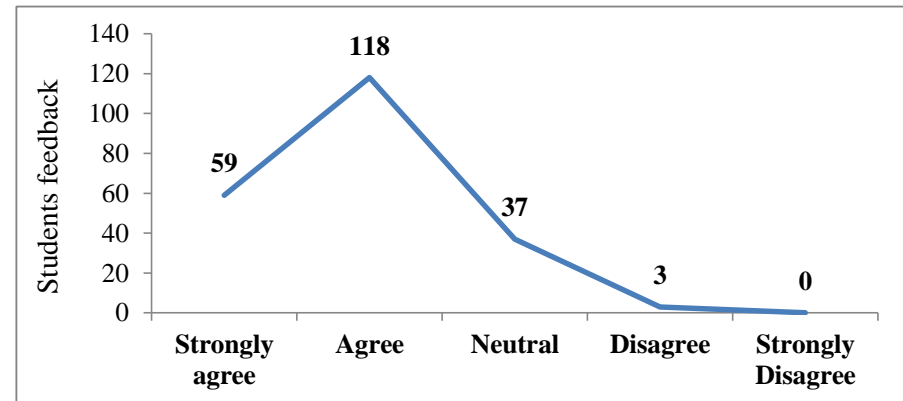


Sign of Principal

**Maharshi Karve Stree Shikshan Samstha's
Smt. Bakul Tambat Institute of Nursing Education
Karvenagar, Pune -52
Students Satisfaction Survey Analysis (2022-23)**

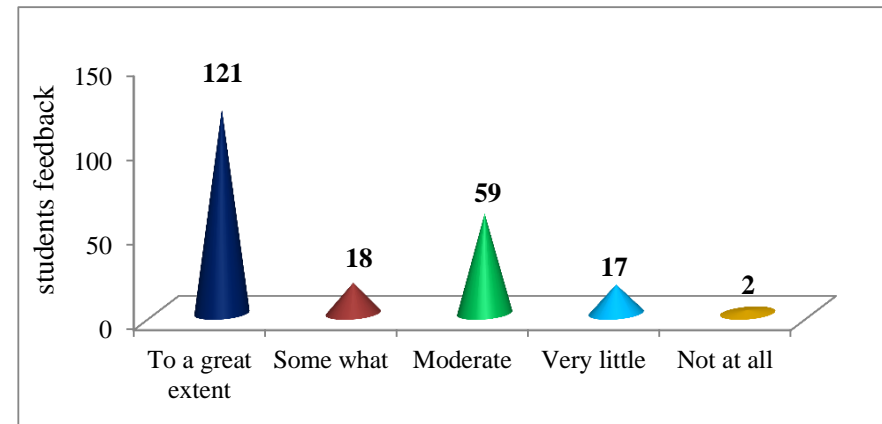
17. Teachers encourage you to participate in extracurricular activities.

Criteria	Frequency	Percentage (%)
Strongly agree	59	27
Agree	118	54
Neutral	37	17
Disagree	3	1
Strongly Disagree	0	0
Total	217	100.00



18. Efforts are made by the institute/ teachers to inculcate soft skills, life skills and employability skills to make you ready for the world of work.

Criteria	Frequency	Percentage (%)
To a great extent	121	56
Some what	18	8
Moderate	59	27
Very little	17	8
Not at all	2	1
Total	217	100.00

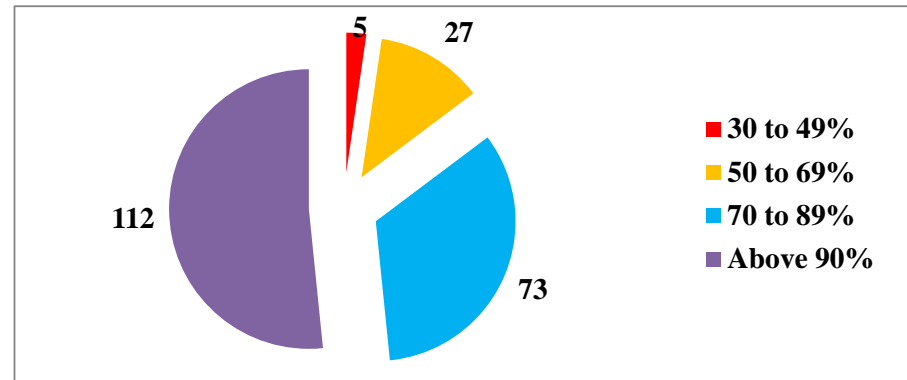


Sign of Principal

**Maharshi Karve Stree Shikshan Samstha's
Smt. Bakul Tambat Institute of Nursing Education
Karvenagar, Pune -52
Students Satisfaction Survey Analysis (2022-23)**

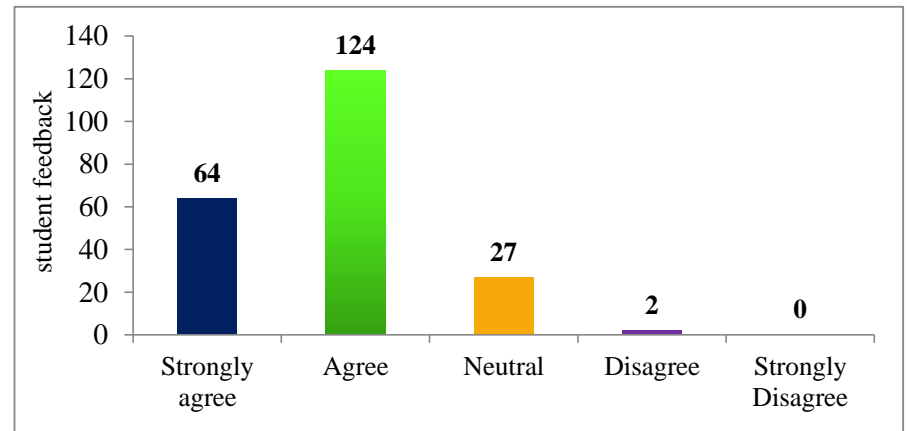
19. What percentage of teachers use ICT tools such as LCD projector, Multimedia, etc. while teaching.

Criteria	Frequency	Percentage (%)
30 to 49%	5	2
50 to 69%	27	12
70 to 89%	73	34
Above 90%	112	52
Total	217	100.00



20. The overall quality of teaching learning process in your Institute is very good

Criteria	Frequency	Percentage (%)
Strongly agree	64	29
Agree	124	57
Neutral	27	12
Disagree	2	1
Strongly Disagree	0	0
Total	217	100.00



Sign of Principal

