



Committed to developing "Conscientious, Confident & Caring quality nursing professionals"
MAHARSHI KARVE STREE SHIKSHAN SAMSTHA'S

Smt. Bakul Tambat Institute of Nursing Education

(Affiliated to MSBNE, MNC, MUHS & INC, NAAC Accredited)



4.3. Library as a Learning resource

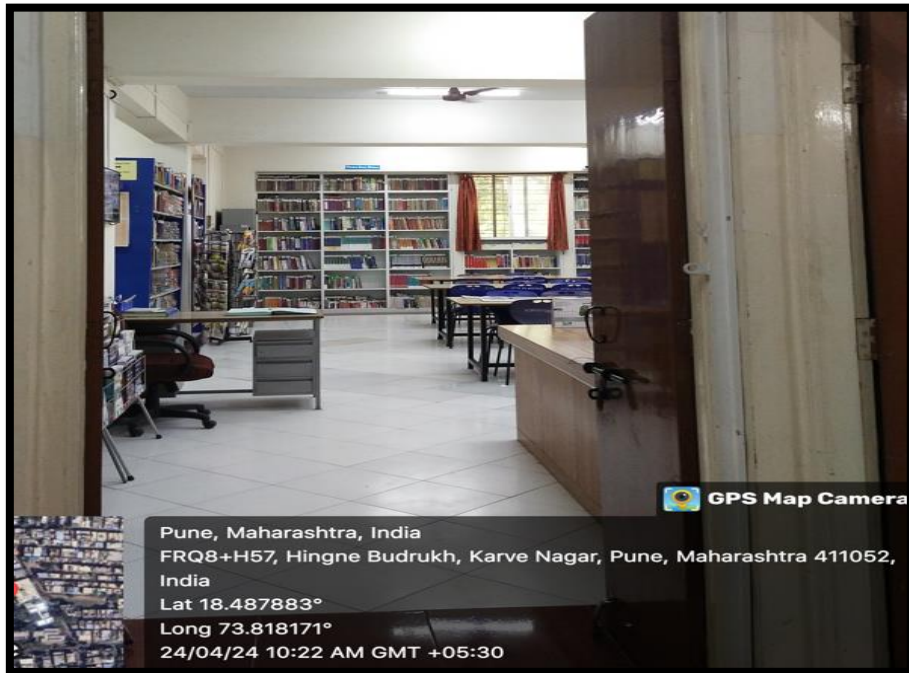
4.3.1 Geo-tagged Photographs of Library Facilities



4.3 Library as a learning resource (2023-2024)

4.3.1 Geo tagged photographs of library facilities

Library Entrance

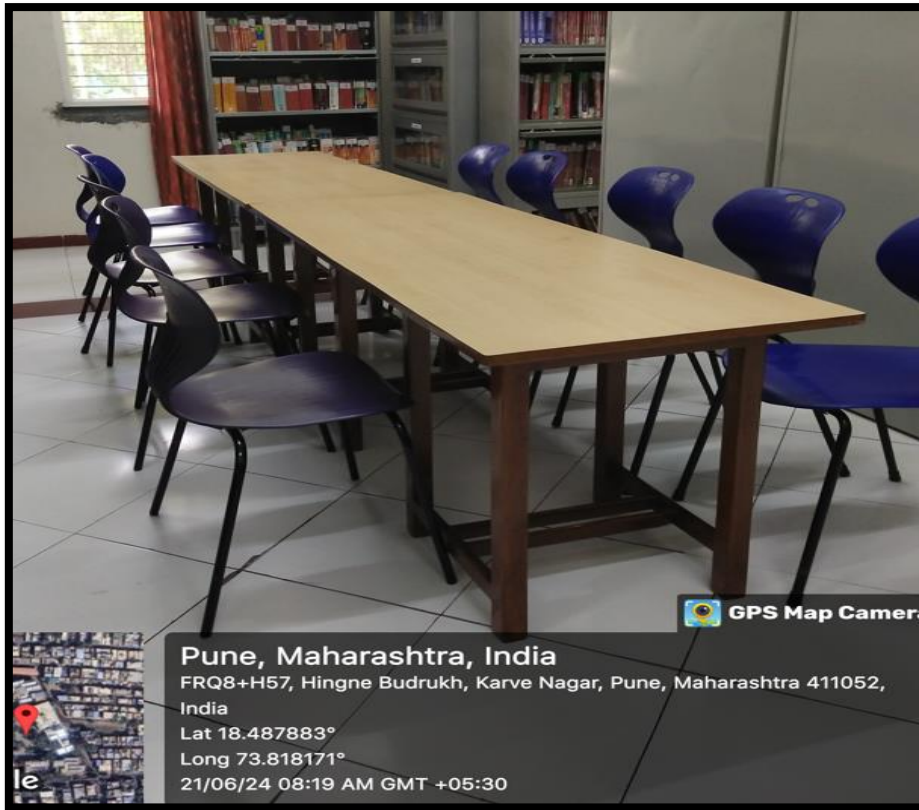


UG Reading Hall





PG Reading Hall

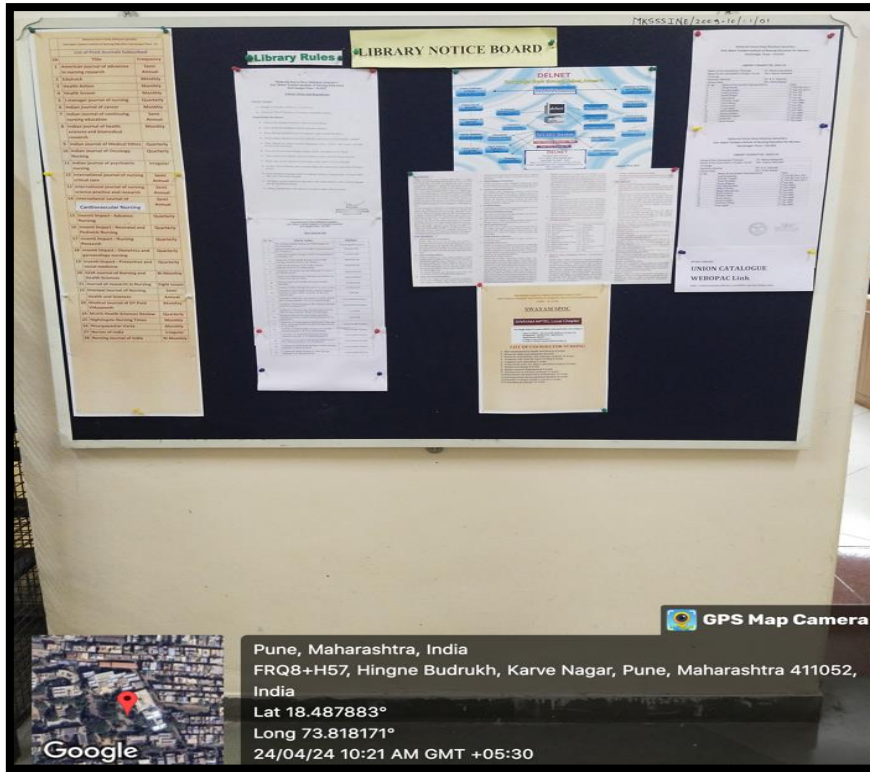


Display Board





Notice Board Display

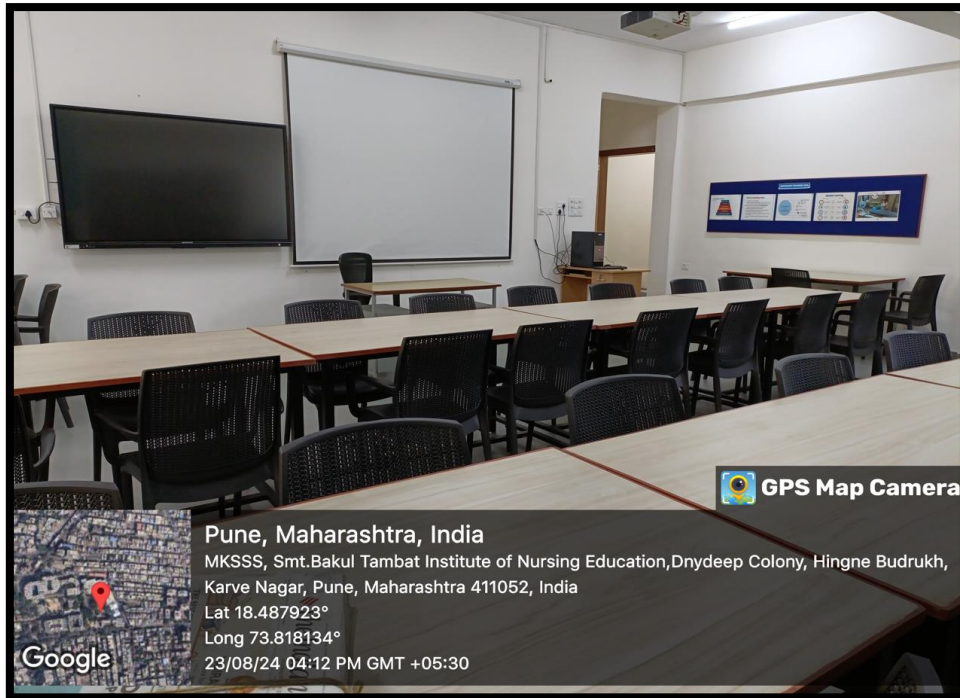


Reference Room

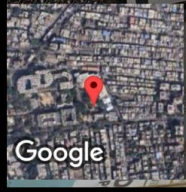




Reading Room

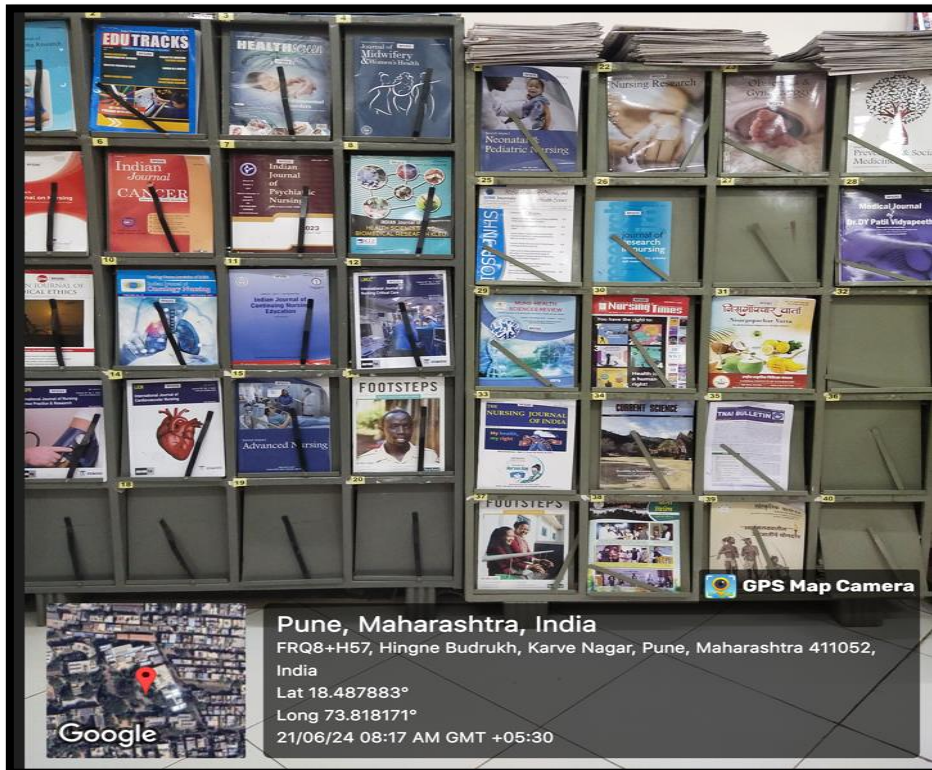


GPS Map Camera



Pune, Maharashtra, India
MKSSS, Smt. Bakul Tambat Institute of Nursing Education, Dnydeep Colony, Hingne Budruk, Karve Nagar, Pune, Maharashtra 411052, India
Lat 18.487923°
Long 73.818134°
23/08/24 04:12 PM GMT +05:30

Journal Display



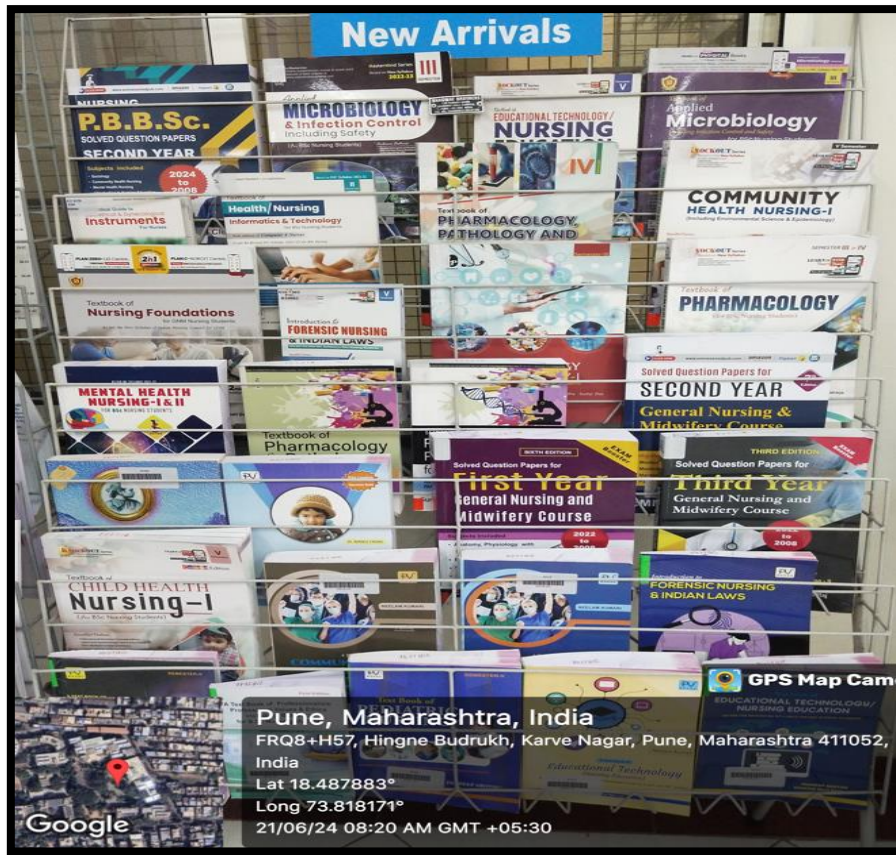
GPS Map Camera



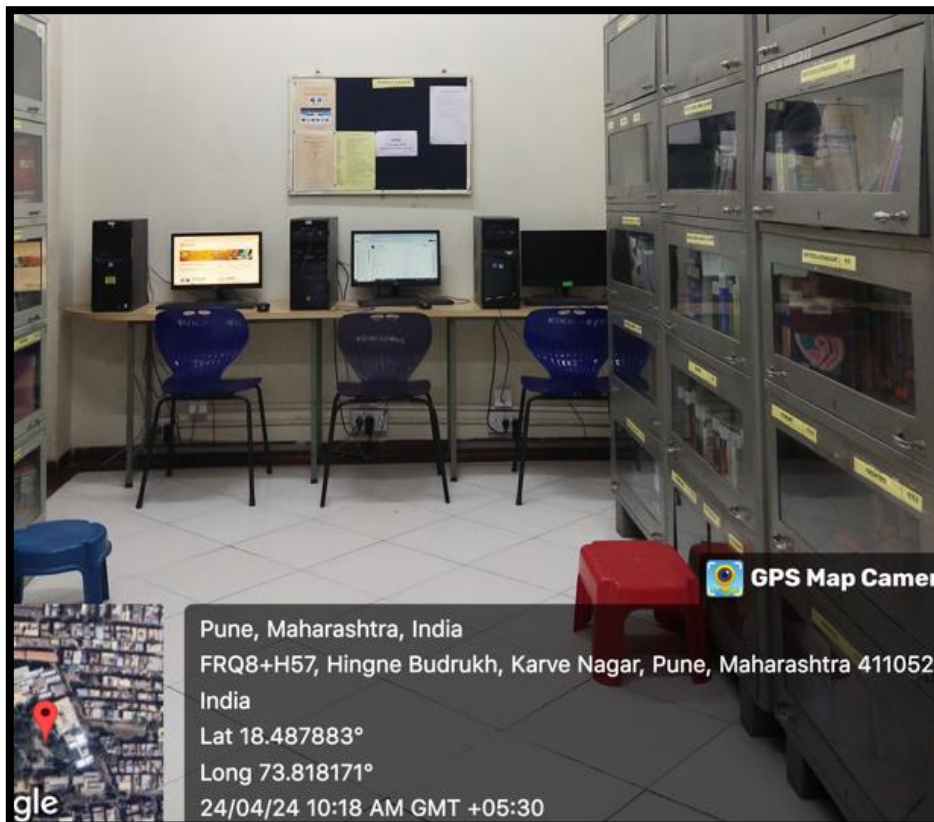
Pune, Maharashtra, India
FRQ8+H57, Hingne Budruk, Karve Nagar, Pune, Maharashtra 411052, India
Lat 18.487883°
Long 73.818171°
21/06/24 08:17 AM GMT +05:30



New Arrival Display



Internet Access





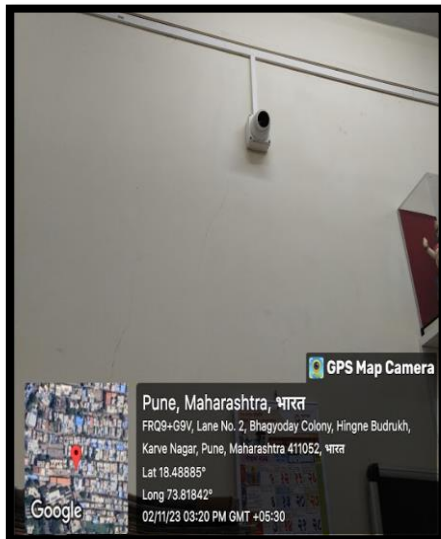
Smt. Bakul Tambat Institute of Nursing Education

(Affiliated to MSBNE, MNC, MUHS & INC, NAAC Accredited)

Xerox Machine



Security Measures



M. Karve
PRINCIPAL

**Maharshi Karve Stree Shikshan Samstha's
Smt. Bakul Tambat Institute of
Nursing Education
Karvenagar, Pune-411052.**